



DATA SIZZLE

DATA IS THE NEW BACON!

INSTITUTIONAL EFFECTIVENESS NEWSLETTER



What's inside this issue:

REAL COLLEGE SURVEY



REAL COLLEGE SURVEY

The Real College survey is a comprehensive basic needs assessment survey conducted for California Community Colleges in 2019 and 2023 by the Research and Planning group (RP Group) who partnered with the CEO Affordability, Food and Housing Access Taskforce of the Community College League of California (CCLC).

The survey was sent to contacts at each college that agreed to participate in the survey administration. The survey was conducted March 17, 2023 to April 19, 2023. Students were entered into a drawing to win a gift card in addition to individual colleges' incentives.

In total, there were 66,741 respondents from 88 colleges to the system-wide survey, with an average of 758 from each college. Allan Hancock College received a file with 1044 participant records. The Office of Institutional Effectiveness further refined the data to exclude records from outside of California and duplicate entries. Data cleaning resulted in the exclusion of 598 records. The data presented in this report includes 446 respondents who reported being a student at Allan Hancock College and residing in California.



DEMOGRAPHICS

A comparison of demographics between Allan Hancock College and Statewide can be found in Table 1. The data shows the demographic differences between Allan Hancock College and the statewide population in 2023. Allan Hancock College has a slightly lower percentage of females and a higher percentage of males compared to the statewide data. Additionally, Allan Hancock College has a higher percentage of Hispanic or Latinx students compared to the statewide average. The age distribution at Allan Hancock College is also different, with a higher percentage of students in the 18 to 20 and 21 to 25 age groups compared to the statewide data.

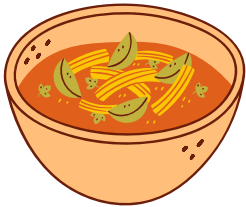
Table 1. Demographics of Survey Sample from Allan Hancock College vs. Statewide Demographics.

Demographics of Survey Sample		
	2023 AHC	2023 Statewide
Gender Orientation		
Female	61%	64%
Male	37%	31%
Other Gender Orientation	2%	3%
Transgender Status		
Transgender	4%	5%
Sexual Orientation		
Bisexual	9%	10%
Gay or Lesbian	2%	4%
Heterosexual or straight	79%	77%
Not sure or <u>neither</u> heterosexual, gay, or lesbian	10%	8%
Racial or Ethnic Background		
African American or Black	7%	6%
American Indian or Alaskan Native	5%	1%
Asian	9%	12%
Hispanic or Latinx	54%	46%
Middle Eastern or North African or Arab or Arab American	2%	2%
Other/Unknown	3%	2%
Pacific Islander or Native Hawaiian	3%	1%
White or Caucasian	33%	25%
Age		
18 to 20	39%	33%
21 to 25	28%	22%
26 to 30	8%	13%
Older than 30	25%	32%

AHC BASIC NEEDS INSECURITY

The survey results reveal that a significant portion of the respondents, 69%, reported experiencing some form of basic needs insecurity. More specifically, 40% of the participants reported food insecurity, indicating challenges related to accessing an adequate food supply. Additionally, 61% reported housing insecurity, suggesting concerns about stable and safe housing. Finally, 27% of the survey participants reported experiencing homelessness, highlighting the substantial impact of housing-related issues for students. These results underscore the prevalence of various forms of basic needs insecurity among the surveyed individuals, with housing insecurity and food insecurity being particularly prominent concerns.

Basic Needs Insecurity Definitions



Food Insecurity is the limited or uncertain availability of nutritionally adequate and safe food, or the ability to acquire such food in a socially acceptable manner.

Timeframe: past 30 days



Housing Insecurity includes a broad set of challenges such as the inability to pay rent or utilities, or the need to move frequently.

Timeframe: past 12 months

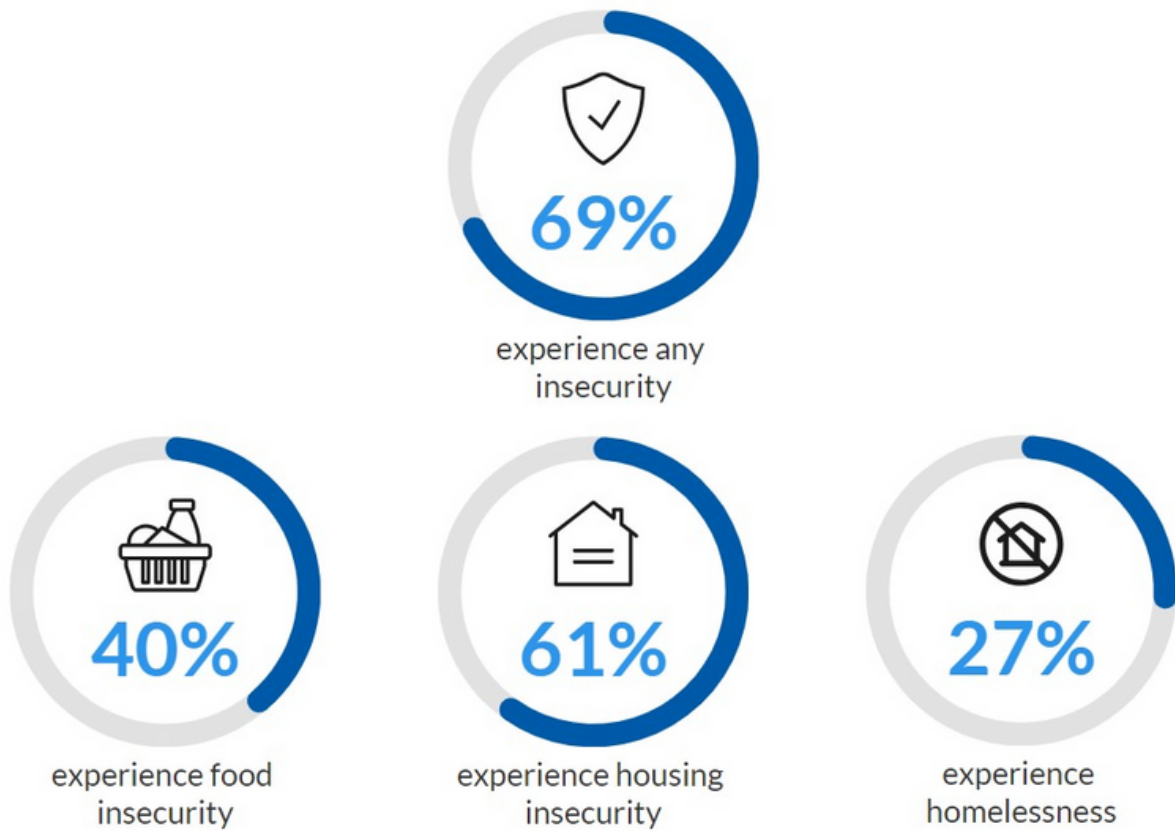


Homelessness means that a person does not have a stable place to live. Students were identified as homeless if they responded affirmatively to a question asking if they had been homeless or if they identified living conditions that are considered signs of homelessness (e.g., couch surfing, living somewhere not meant for habitation).

Timeframe: past 12 months

AHC BASIC NEEDS INSECURITY

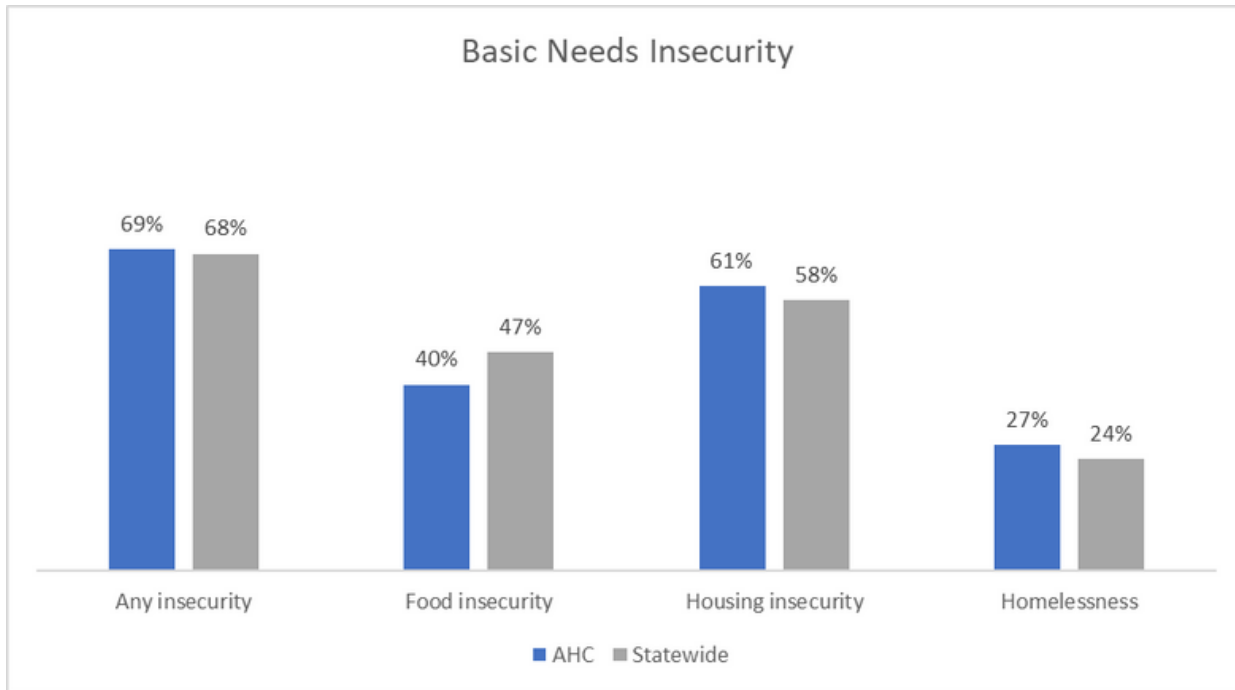
Basic Needs Insecurities Among AHC Student Survey Respondents in 2023



2 out of 3 students report experiencing at least one basic needs insecurity

AHC VS. STATEWIDE BASIC NEEDS INSECURITY

Basic Needs Insecurities Among California Community College Survey Respondents: Allan Hancock College vs. Statewide



The Real College survey sheds light on the basic needs insecurities among California community college students, revealing significant challenges in the areas of food, housing, and homelessness. Despite Allan Hancock College students reporting a slightly lower overall rate of food insecurity compared to the statewide average (40% vs. 47%), housing insecurity at AHC is slightly higher (61% vs. 58%). Moreover, the rate of homelessness among AHC students is notably elevated at 27%, surpassing the statewide figure of 24%. These findings underscore the importance of Allan Hancock College’s Basic Needs Office and the pressing need for targeted interventions and support systems to address the unique challenges faced by Allan Hancock College students.

Real College Survey Report