



DATA SIZZLE

DATA IS THE NEW BACON!

INSTITUTIONAL EFFECTIVENESS NEWSLETTER

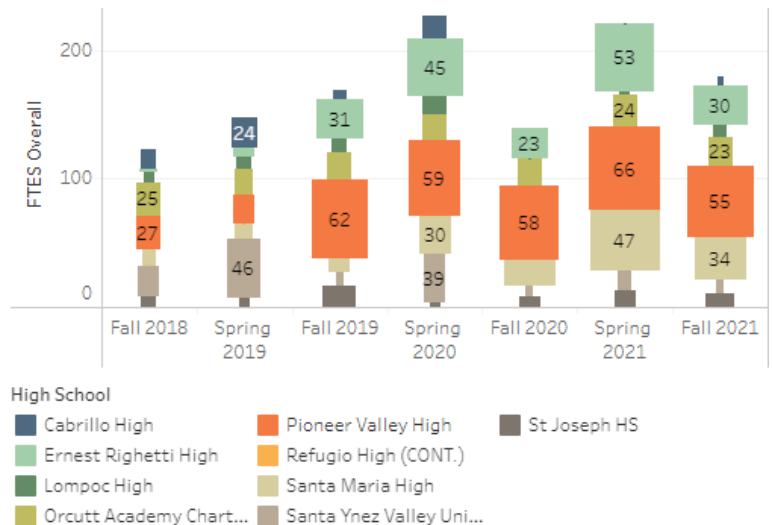


CONCURRENT ENROLLMENT UPDATE

As seen in the previous newsletter ([Oct 2021](#)), concurrent enrollment at AHC has been increasing over the past four years even as credit enrollment at AHC has been on a decline. With no signs of stopping, spring 2022 already has 109 concurrent enrollment sections planned which would be an increase of about 120% compared to spring 2019 sections offered (50) and a record high for concurrent enrollment sections in any term for AHC.

Below is a detail graph on which local high schools are generating the most FTES in concurrent enrollment. The last two years have seen the majority of concurrent enrollment students coming from Pioneer Valley, Santa Maria High and Righetti High.

View the [Concurrent Dashboard](#) for more details.



What's inside this issue:

CONCURRENT ENROLLMENT UPDATE

OUTCOMES OF SPECIAL ADMIT STUDENTS

IE WEBSITE UPDATE

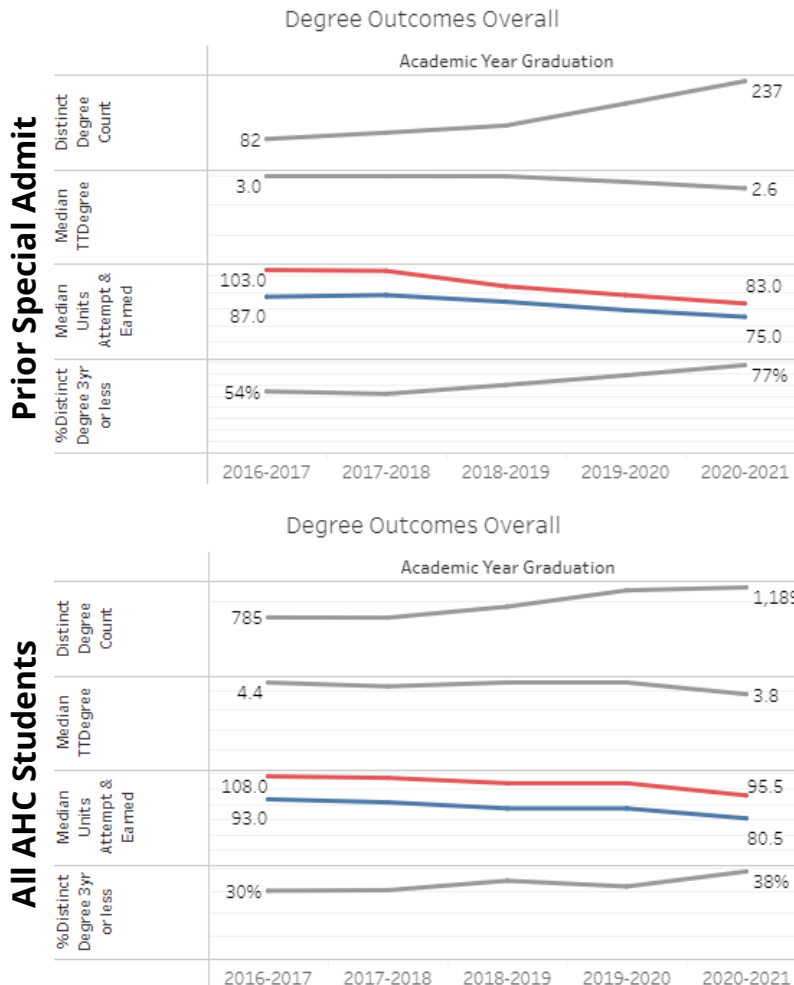
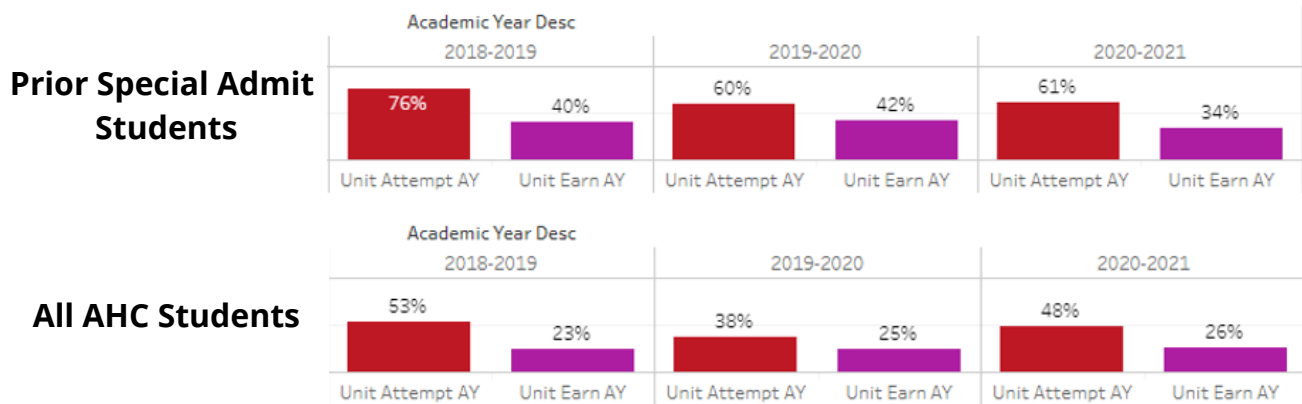


SPECIAL ADMIT STUDENT OUTCOMES

PRIOR SPECIAL ADMIT STUDENTS ARE CONCURRENT AND/OR COLLEGE-NOW STUDENTS

The Special Admit enrollment type is comprised of two student groups. The first is CollegeNOW - high school students who have not graduated and are enrolled in courses at AHC. The second is Concurrent - high school students enrolled in AHC courses offered at the local high schools. Over the past five years concurrent enrollment went from comprising 23% of special admit enrollments to 84% of special admit enrollments. For more detail see the [Cohort Dashboard](#).

Bar graphs below show the percentage of first time degree seeking students who attempt/earn 24+ units in their first academic year. Prior special admit students are far more likely to attempt and complete 24+ units.



Median time to degree (TTDegree) is the 'middle' number of years it took a student in the data set to earn a degree. Similar to an average, the median is not affected as much by data outliers. Of the students who earned a degree in 20-21, students with prior special admit enrollments earned their degree over a year faster than all AHC students.

Of the students who earned a degree in 20-21, students with prior special admit enrollments attempted 12 fewer units and earned 5 fewer units than all AHC students. This goes with the previous data point. The less units a student attempts the faster they meet their goal.

Finally, of the students who earned a degree in 20-21, 77% of students with prior special admit enrollments completed the degree within three years compared to 38% of all AHC students.

All degree data - students started at AHC

IE WEBSITE UPDATE

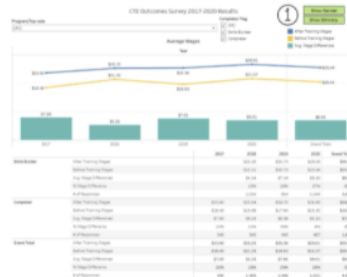
Quick Facts is located on [IE Home](#)

CTE Dashboard, Trustee Dashboard, and Guided Pathways Dashboards are located on [IE Data](#)



QUICK FACTS

Looking for quick facts about AHC? Find them here with our new infographics.



CTE OUTCOMES SURVEY DATA

AHC's data from the 2017-2020 CTE outcomes surveys conducted by Santa Rosa College.



QUICK DATA

FACT BOOK

Answer frequently asked questions about AHC's service area, students, programs, faculty, and staff.

TRUSTEE DATA

Fall headcount comparison of concurrent, credit, and non-credit students with demographic filters.



GUIDED PATHWAYS

Data relevant to support guided pathways.

DATA DASHBOARDS

Student Journey



CONNECTION

Initial Interest through Submission of Application

ENTRY

Enrollment Through Completion of 'Gatekeeper' Courses

PROGRESS

Entry into Course of Study through Completion of 75% of Requirements

COMPLETION

Complete Course of Study through Earning a Credential with Labor Market Value

TRANSITION

Movement to Four-Year University or to Workplace with Living Wage

Completion and Transition dashboards coming soon!

QUICK BITES

In fall 2021 AHC rolled out the 'Promise Plus' program. This program covers tuition and fees for any first-time, continuing, returning, transfer, and international student taking 12+ units in a term -- regardless of residency.

In fall 2021 AHC had 1484 students who qualified for the Promise Plus program.